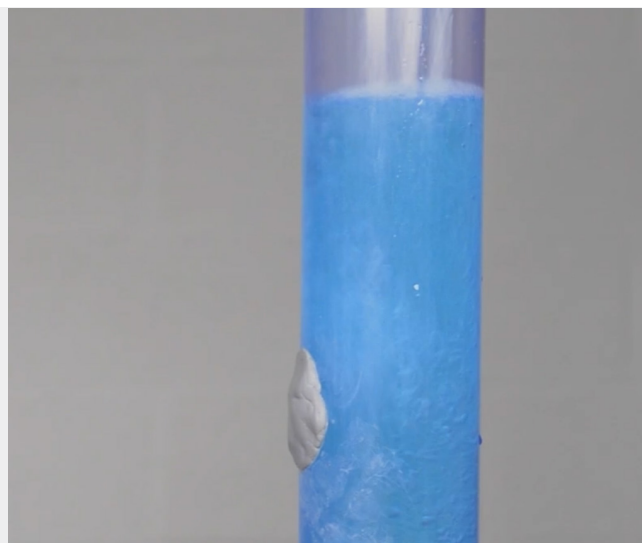


EPICOL T

EPICOL T IS AN EPOXY-BASED PUTTY WITH A SIMPLE MIXING RATIO SUITABLE FOR FILLING, MOULDING AND REPAIRING.



ADVANTAGES

- Can be applied underwater
- High adhesive power
- Simple mixing ratio 1 : 1 with colour control
- Solvent-free
- No long-term adverse aquatic life effects
- Applicable horizontally and vertically
- Can be worked after curing
- Limited layer thickness



FIELD OF APPLICATION

EPICOL T can be applied underwater and sticks to wood, stone, concrete and metal. After curing, EPICOL T is suitable for mechanical processing.

